

### PCWA Facilities and Features

- Dam
- Ancillary and Other Facilities
- Powerhouse
- Gage
- Penstock
- Tunnel
- Pipeline
- Gate
- Closure
- Access Point
- Public Safety Fence
- FERC Boundary
- Water Supply Line (above ground)
- Water Supply Line (buried)
- Project Power and Communication Lines:**
- Communication
- Power (underground)
- Communication/Power
- Communication/Power (underground)

### Transportation

- Non-Project General Access Road
- Project Road
- Project Trail
- Recreation Access Road
- Recreation Water Supply Facility Access Road or Trail
- Other Road

### Project Recreation Facilities

- Picnic Area
- Boat Ramp
- Scenic Viewpoint
- Developed Campground
- Recreation Facility Footprints

### Other Facilities

PG & E Transmission Lines:

- 230 kV
- 60 kV

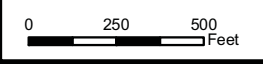
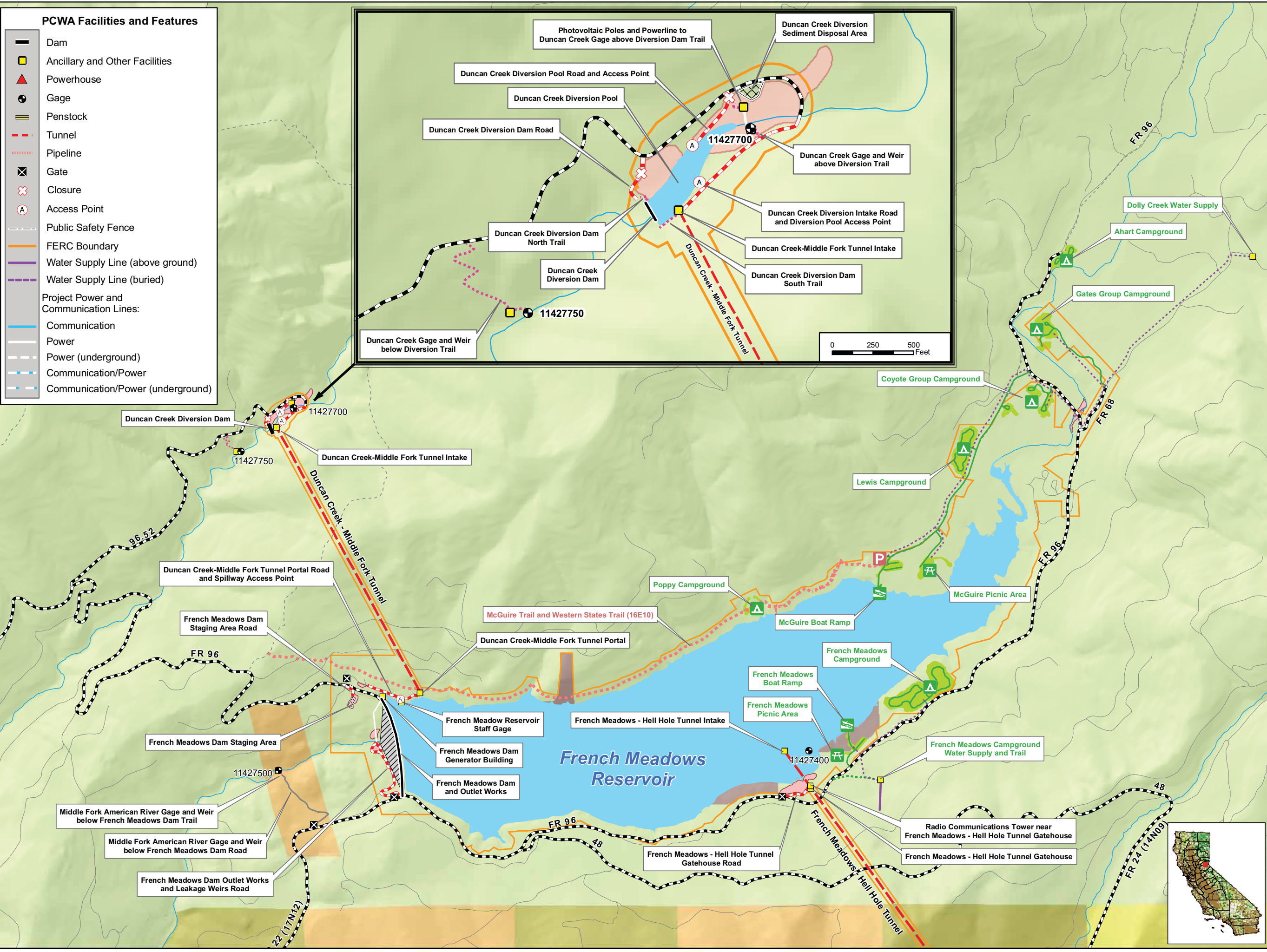
### Facilities and Dispersed Recreation Areas Identified by Stakeholders

- Recreation Access OHV Road
- Recreation Access Trail
- Trailhead
- Dispersed Concentrated Use Area
- Parking Area

### Land Jurisdictions / Ownership\*

- Eldorado National Forest
- Tahoe National Forest
- PCWA
- Lone Star Timber
- Sierra Pacific Industries\*\*
- Other Private (Blank)

\*\* Includes former properties of R.H. Emmerson & Son, LLC



\* PARCEL DATA SOURCES:  
 Placer County, July 2006,  
 El Dorado County, February 2007,  
 USFS Region 5, February 2009.  
 Some data has been modified to account for known errors  
 and is to be used for general planning purposes only.

Placer County Water Agency  
 Middle Fork American River Project

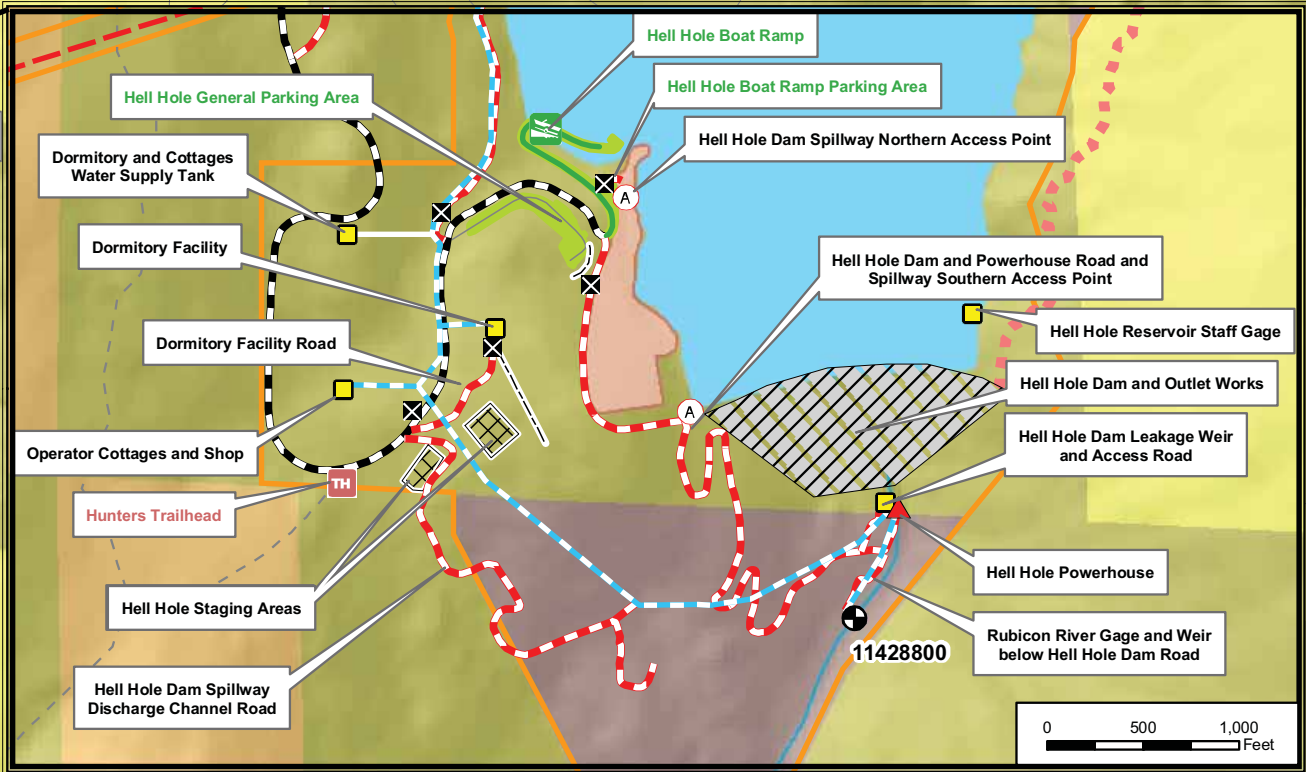
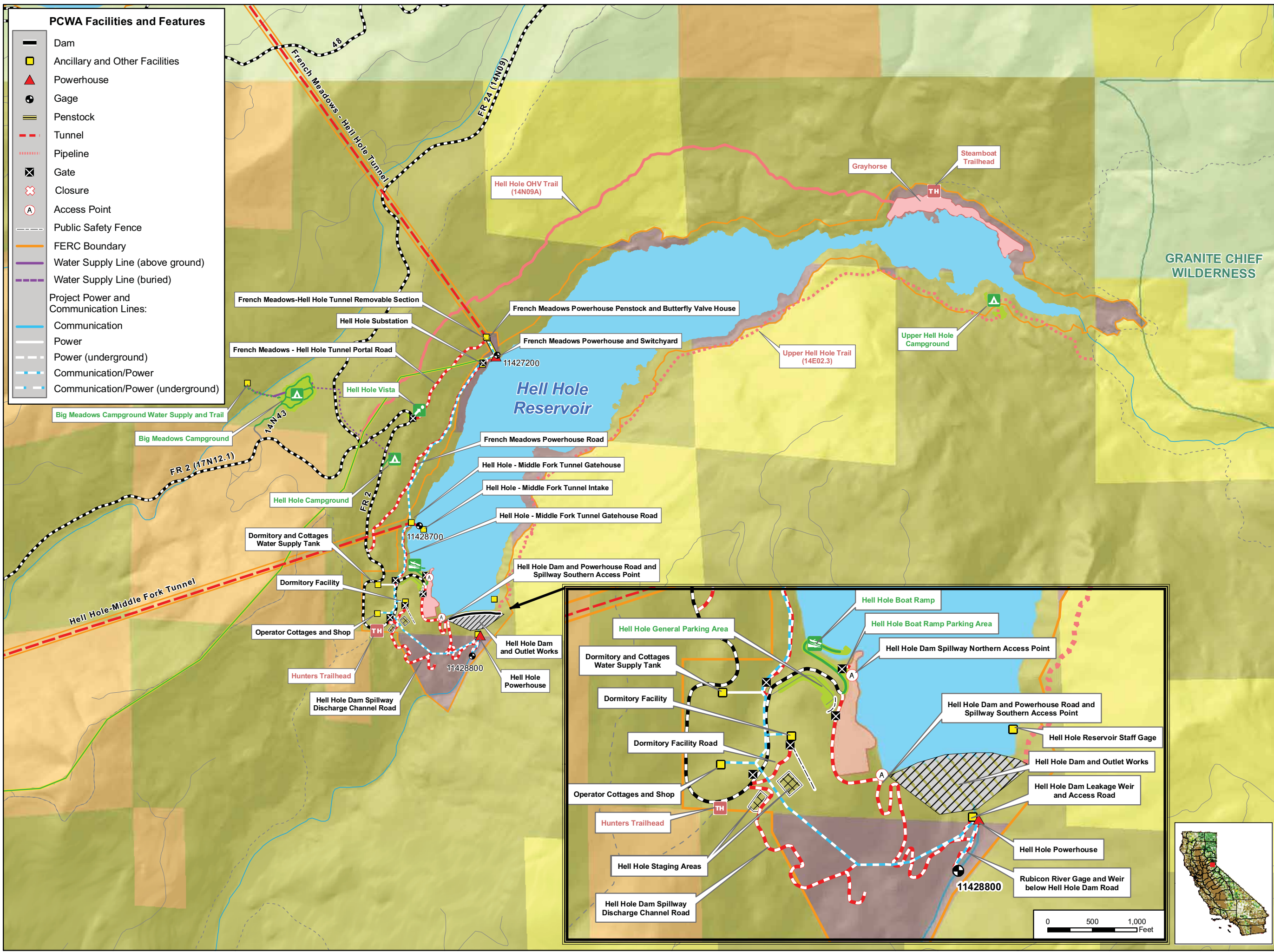
### Map LAND 1-1

Sheet 1 of 6  
 Duncan Creek, French Meadows Area

0 0.25 0.5 Miles  
 Projection: Ca. Stateplane, Zone 2  
 Datum: NAD 83  
 Date: 5/21/09

- ### PCWA Facilities and Features
- Dam
  - Ancillary and Other Facilities
  - Powerhouse
  - Gage
  - Penstock
  - Tunnel
  - Pipeline
  - Gate
  - Closure
  - Access Point
  - Public Safety Fence
  - FERC Boundary
  - Water Supply Line (above ground)
  - Water Supply Line (buried)
  - Project Power and Communication Lines:
    - Communication
    - Power
    - Power (underground)
    - Communication/Power
    - Communication/Power (underground)

- ### Transportation
- Non-Project General Access Road
  - Project Road
  - Project Trail
  - Recreation Access Road
  - Recreation Water Supply Facility Access Road or Trail
  - Other Road
- ### Project Recreation Facilities
- Picnic Area
  - Boat Ramp
  - Scenic Viewpoint
  - Developed Campground
  - Recreation Facility Footprints
- ### Other Facilities
- PG & E Transmission Lines:
- 230 kV
  - 60 kV
- ### Facilities and Dispersed Recreation Areas Identified by Stakeholders
- Recreation Access OHV Road
  - Recreation Access Trail
  - Trailhead
  - Dispersed Concentrated Use Area
  - Parking Area
- ### Land Jurisdictions / Ownership\*
- Eldorado National Forest
  - Tahoe National Forest
  - PCWA
  - Lone Star Timber
  - Sierra Pacific Industries\*\*
  - Other Private (Blank)
- \*\* Includes former properties of R.H. Emmerson & Son, LLC



\* PARCEL DATA SOURCES:  
 Placer County, July 2006,  
 El Dorado County, February 2007,  
 USFS Region 5, February 2009.  
 Some data has been modified to account for known errors  
 and is to be used for general planning purposes only.

Placer County Water Agency  
 Middle Fork American River Project

**Map LAND 1-1**  
**Sheet 2 of 6**  
**Hell Hole Area**

0 0.25 0.5 Miles  
 Projection: Ca. Stateplane, Zone 2  
 Datum: NAD 83

Date: 4/27/09

### PCWA Facilities and Features

- Dam
- Ancillary and Other Facilities
- Powerhouse
- Gage
- Penstock
- Tunnel
- Pipeline
- Gate
- Closure
- Access Point
- Public Safety Fence
- FERC Boundary
- Water Supply Line (above ground)
- Water Supply Line (buried)
- Project Power and Communication Lines:**
- Communication
- Power
- Power (underground)
- Communication/Power
- Communication/Power (underground)

### Transportation

- Non-Project General Access Road
- Project Road
- Project Trail
- Recreation Access Road
- Recreation Water Supply Facility Access Road or Trail
- Other Road

### Project Recreation Facilities

- Picnic Area
- Boat Ramp
- Scenic Viewpoint
- Developed Campground
- Recreation Facility Footprints

### Other Facilities

PG & E Transmission Lines:

- 230 kV
- 60 kV

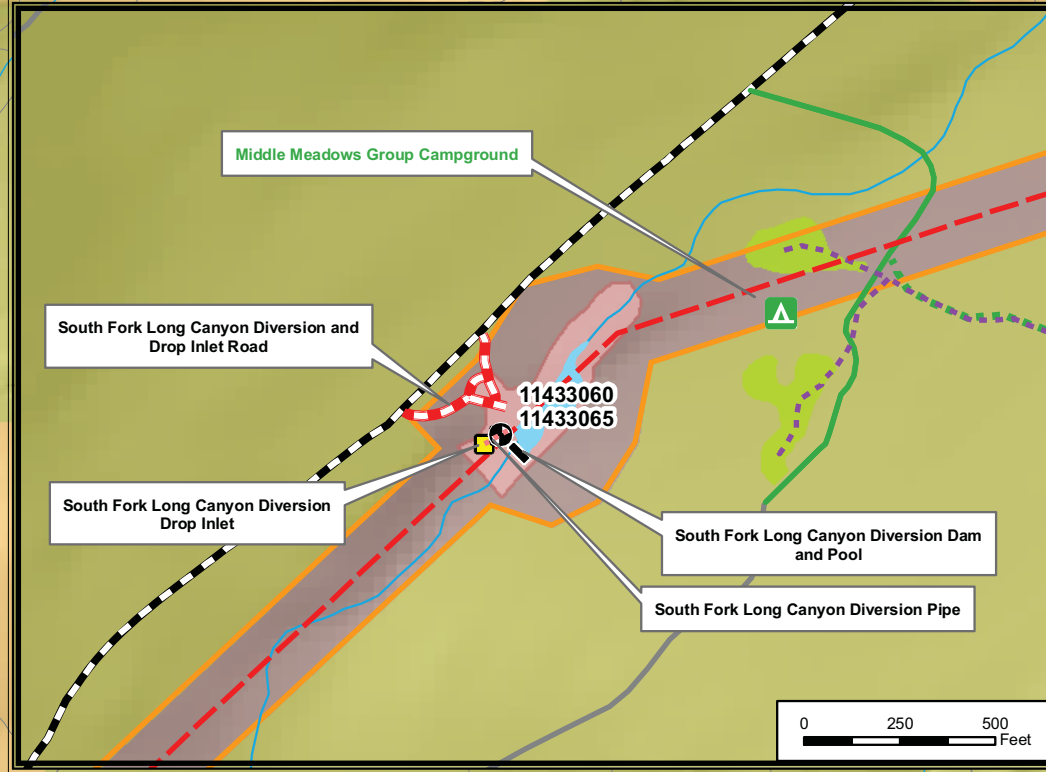
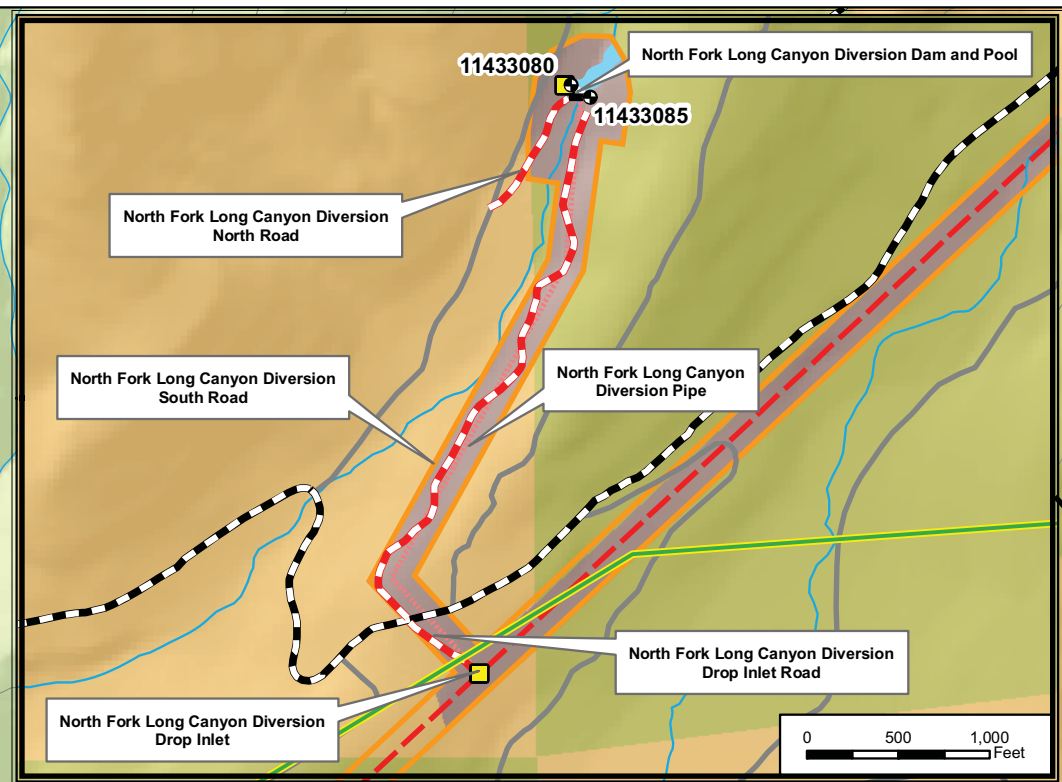
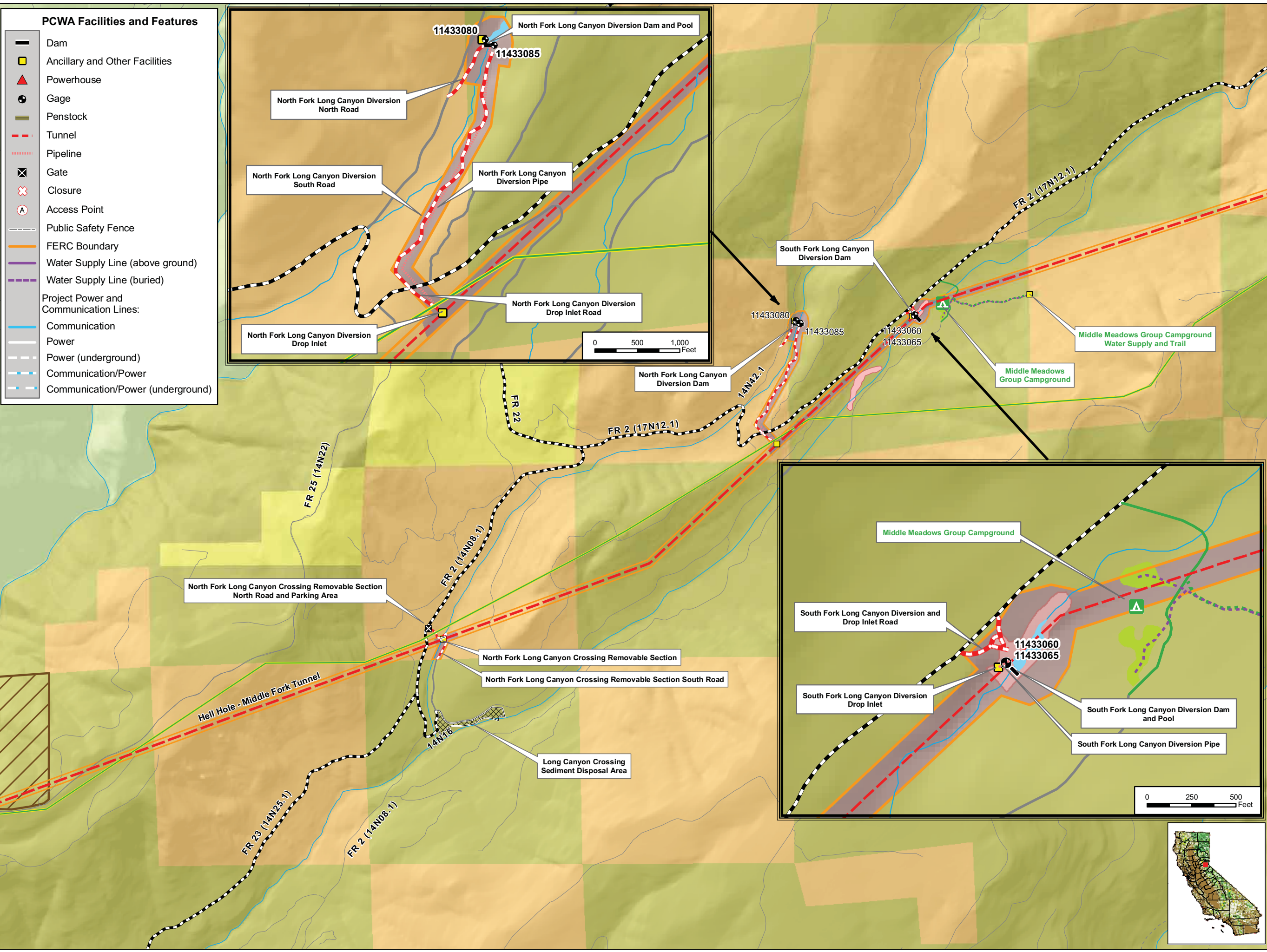
### Facilities and Dispersed Recreation Areas Identified by Stakeholders

- Recreation Access OHV Road
- Recreation Access Trail
- Trailhead
- Dispersed Concentrated Use Area
- Parking Area

### Land Jurisdictions / Ownership\*

- Eldorado National Forest
- Tahoe National Forest
- PCWA
- Lone Star Timber
- Sierra Pacific Industries\*\*
- Other Private (Blank)

\*\* Includes former properties of R.H. Emmerson & Son, LLC



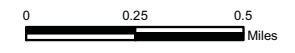
\* PARCEL DATA SOURCES:  
 Placer County, July 2006,  
 El Dorado County, February 2007,  
 USFS Region 5, February 2009.  
 Some data has been modified to account for known errors  
 and is to be used for general planning purposes only.



Placer County Water Agency  
 Middle Fork American River Project

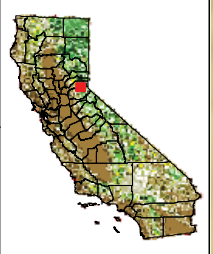
**Map LAND 1-1**

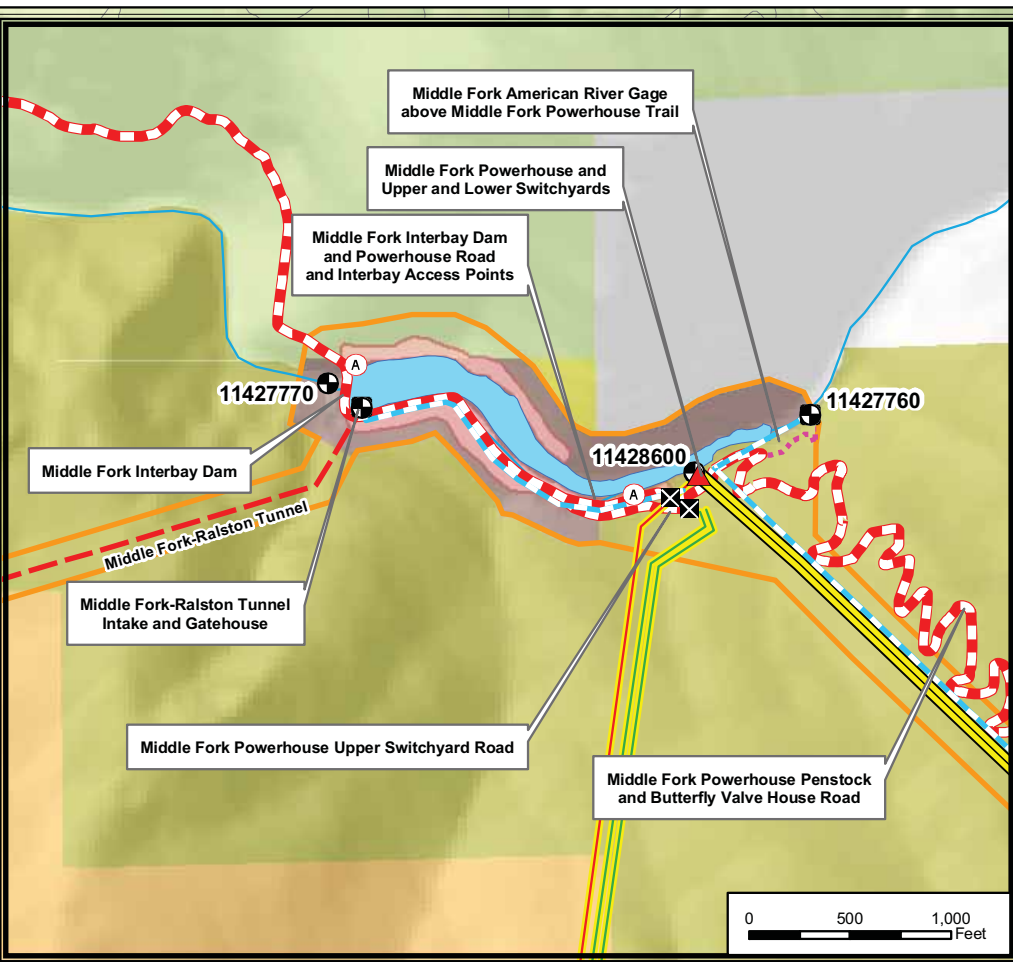
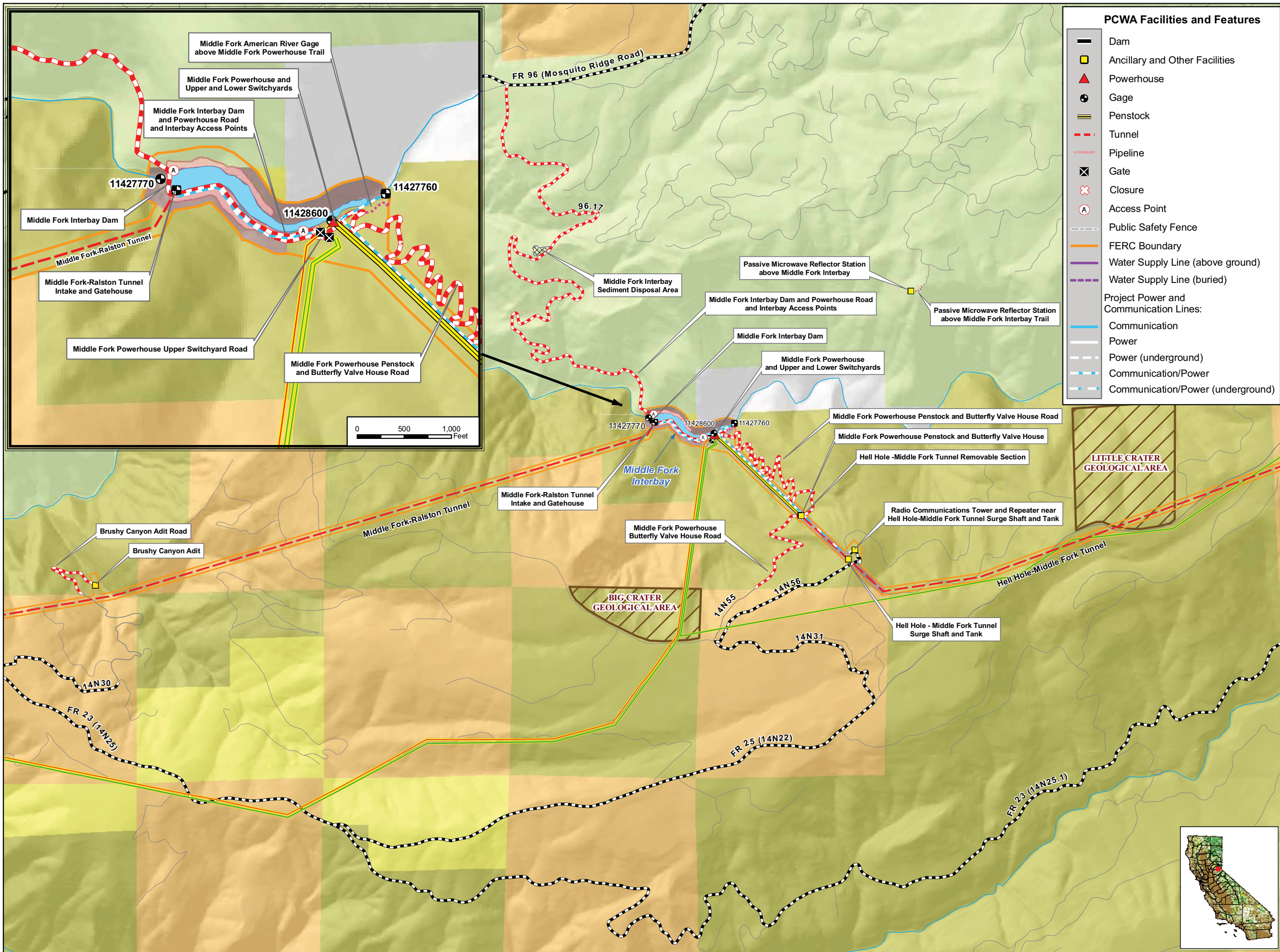
Sheet 3 of 6  
 Long Canyon Area



Date: 4/27/09

Projection: Ca. Stateplane, Zone 2  
 Datum: NAD 83





### PCWA Facilities and Features

- Dam
- Ancillary and Other Facilities
- Powerhouse
- Gage
- Penstock
- Tunnel
- Pipeline
- Gate
- Closure
- Access Point
- Public Safety Fence
- FERC Boundary
- Water Supply Line (above ground)
- Water Supply Line (buried)
- Project Power and Communication Lines: Communication
- Project Power and Communication Lines: Power
- Project Power and Communication Lines: Power (underground)
- Project Power and Communication Lines: Communication/Power
- Project Power and Communication Lines: Communication/Power (underground)

### Transportation

- Non-Project General Access Road
- Project Road
- Project Trail
- Recreation Access Road
- Recreation Water Supply Facility Access Road or Trail
- Other Road

### Project Recreation Facilities

- Picnic Area
- Boat Ramp
- Scenic Viewpoint
- Developed Campground
- Recreation Facility Footprints

### Other Facilities

PG & E Transmission Lines:

- 230 kV
- 60 kV

### Facilities and Dispersed Recreation Areas Identified by Stakeholders

- Recreation Access OHV Road
- Recreation Access Trail
- Trailhead
- Dispersed Concentrated Use Area
- Parking Area

### Land Jurisdictions / Ownership\*

- Eldorado National Forest
- Tahoe National Forest
- PCWA
- Lone Star Timber
- Sierra Pacific Industries\*\*
- Other Private (Blank)

\*\* Includes former properties of R.H. Emmerson & Son, LLC

\* PARCEL DATA SOURCES:  
 Placer County, July 2006,  
 El Dorado County, February 2007,  
 USFS Region 5, February 2009.  
 Some data has been modified to account for known errors and is to be used for general planning purposes only.

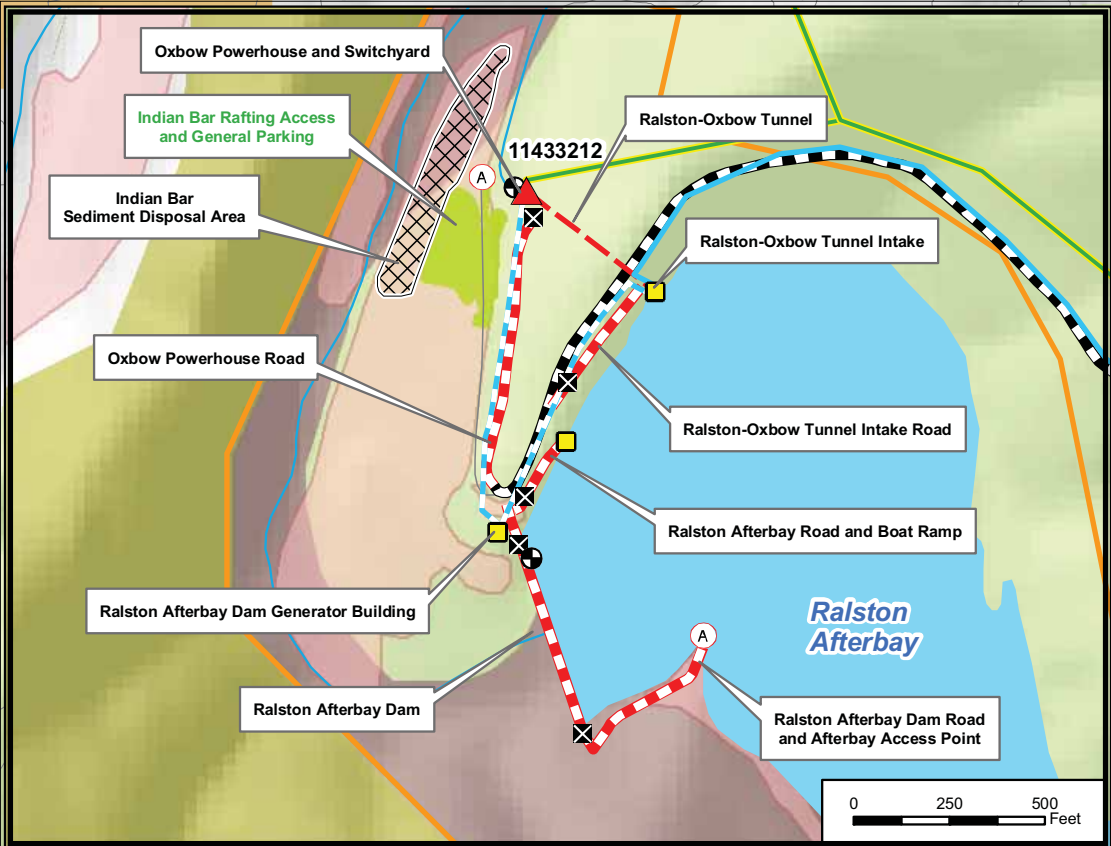
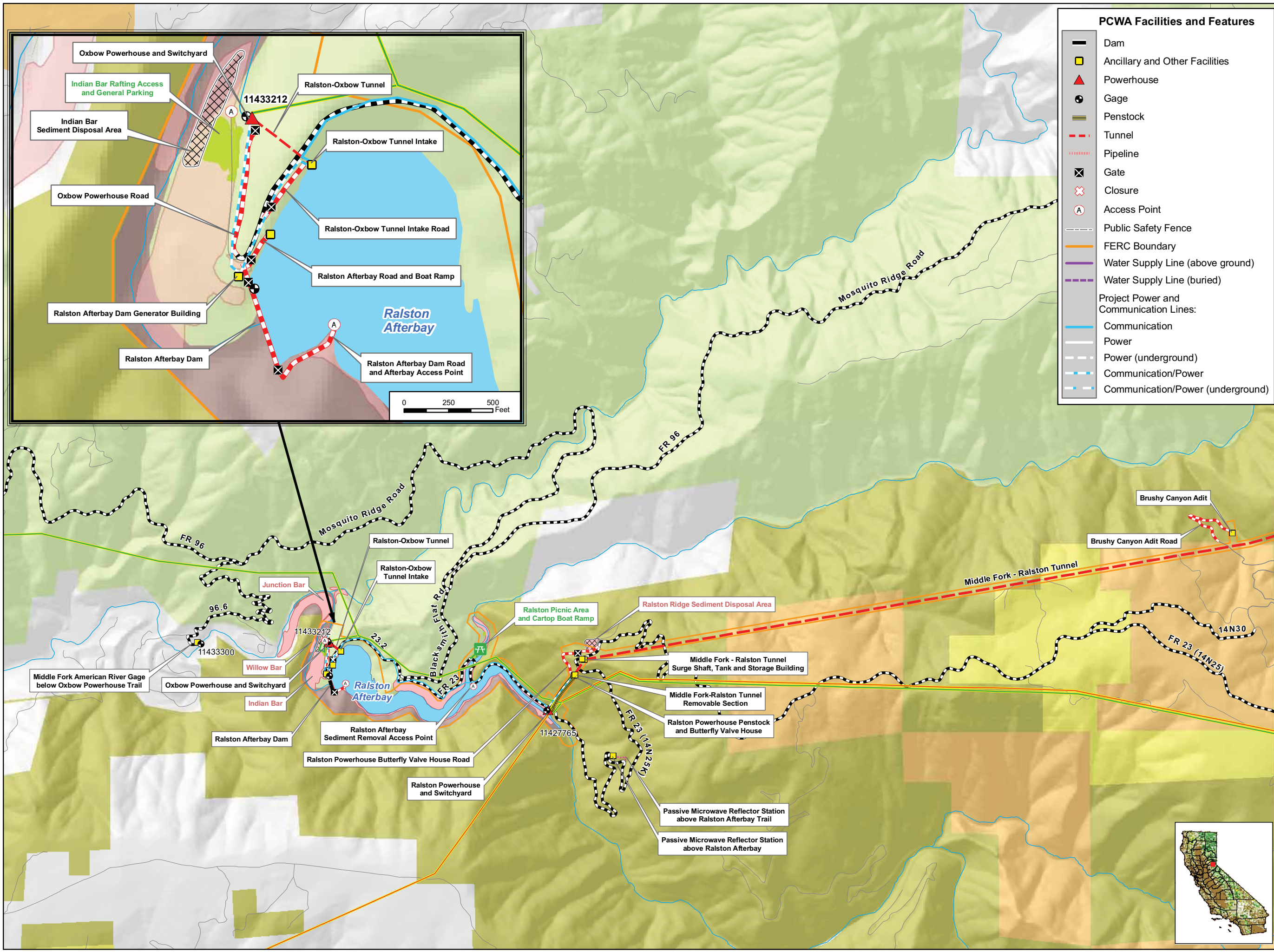
Placer County Water Agency  
Middle Fork American River Project

**Map LAND 1-1**

Sheet 4 of 6  
Middle Fork Interbay Area

Projection: Ca. Stateplane, Zone 2  
Datum: NAD 83

Date: 5/8/09



### PCWA Facilities and Features

- Dam
- Ancillary and Other Facilities
- Powerhouse
- Gage
- Penstock
- Tunnel
- Pipeline
- Gate
- Closure
- Access Point
- Public Safety Fence
- FERC Boundary
- Water Supply Line (above ground)
- Water Supply Line (buried)
- Project Power and Communication Lines:
  - Communication
  - Power
  - Power (underground)
  - Communication/Power
  - Communication/Power (underground)

### Transportation

- Non-Project General Access Road
- Project Road
- Project Trail
- Recreation Access Road
- Recreation Water Supply Facility Access Road or Trail
- Other Road

### Project Recreation Facilities

- Picnic Area
- Boat Ramp
- Scenic Viewpoint
- Developed Campground
- Recreation Facility Footprints

### Other Facilities

PG & E Transmission Lines:

- 230 kV
- 60 kV

### Facilities and Dispersed Recreation Areas Identified by Stakeholders

- Recreation Access OHV Road
- Recreation Access Trail
- Trailhead
- Dispersed Concentrated Use Area
- Parking Area

### Land Jurisdictions / Ownership\*

- Eldorado National Forest
- Tahoe National Forest
- PCWA
- Lone Star Timber
- Sierra Pacific Industries\*\*
- Other Private (Blank)

\*\* Includes former properties of R.H. Emmerson & Son, LLC

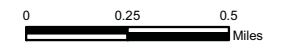
\* PARCEL DATA SOURCES:  
 Placer County, July 2006,  
 El Dorado County, February 2007,  
 USFS Region 5, February 2009.  
 Some data has been modified to account for known errors  
 and is to be used for general planning purposes only.



Placer County Water Agency  
 Middle Fork American River Project

**Map LAND 1-1**

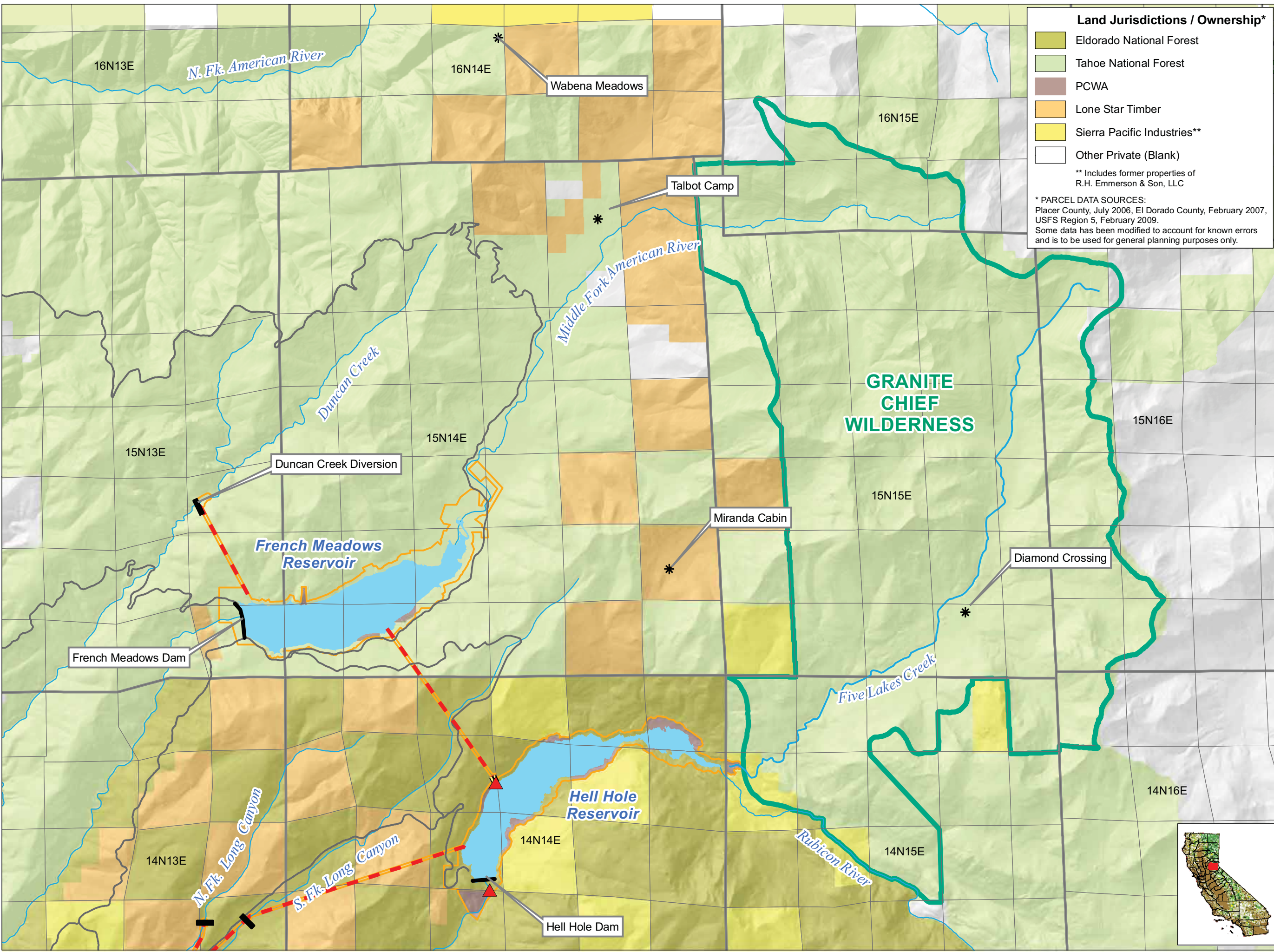
Sheet 5 of 6  
 Ralston - Oxbow Area



Projection: Ca. Stateplane, Zone 2  
 Datum: NAD 83

Date: 5/21/09





**Land Jurisdictions / Ownership\***

- Eldorado National Forest
- Tahoe National Forest
- PCWA
- Lone Star Timber
- Sierra Pacific Industries\*\*
- Other Private (Blank)

\*\* Includes former properties of R.H. Emmerson & Son, LLC

\* PARCEL DATA SOURCES:  
Placer County, July 2006, El Dorado County, February 2007, USFS Region 5, February 2009.  
Some data has been modified to account for known errors and is to be used for general planning purposes only.

**Project Facilities**

- Powerhouse
- Dam
- Snow Course Location
- Tunnel
- Penstock
- FERC Boundary

**Transportation**


- Roads

**Hydrography**

- Watercourse
- Water Body

**Designated Boundary**


- Wilderness Area



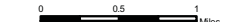
Placer County Water Agency  
Middle Fork American River Project

**Map LAND 1-1**

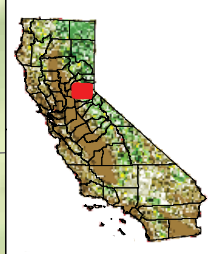
Sheet 6 of 6  
Project Snow Courses

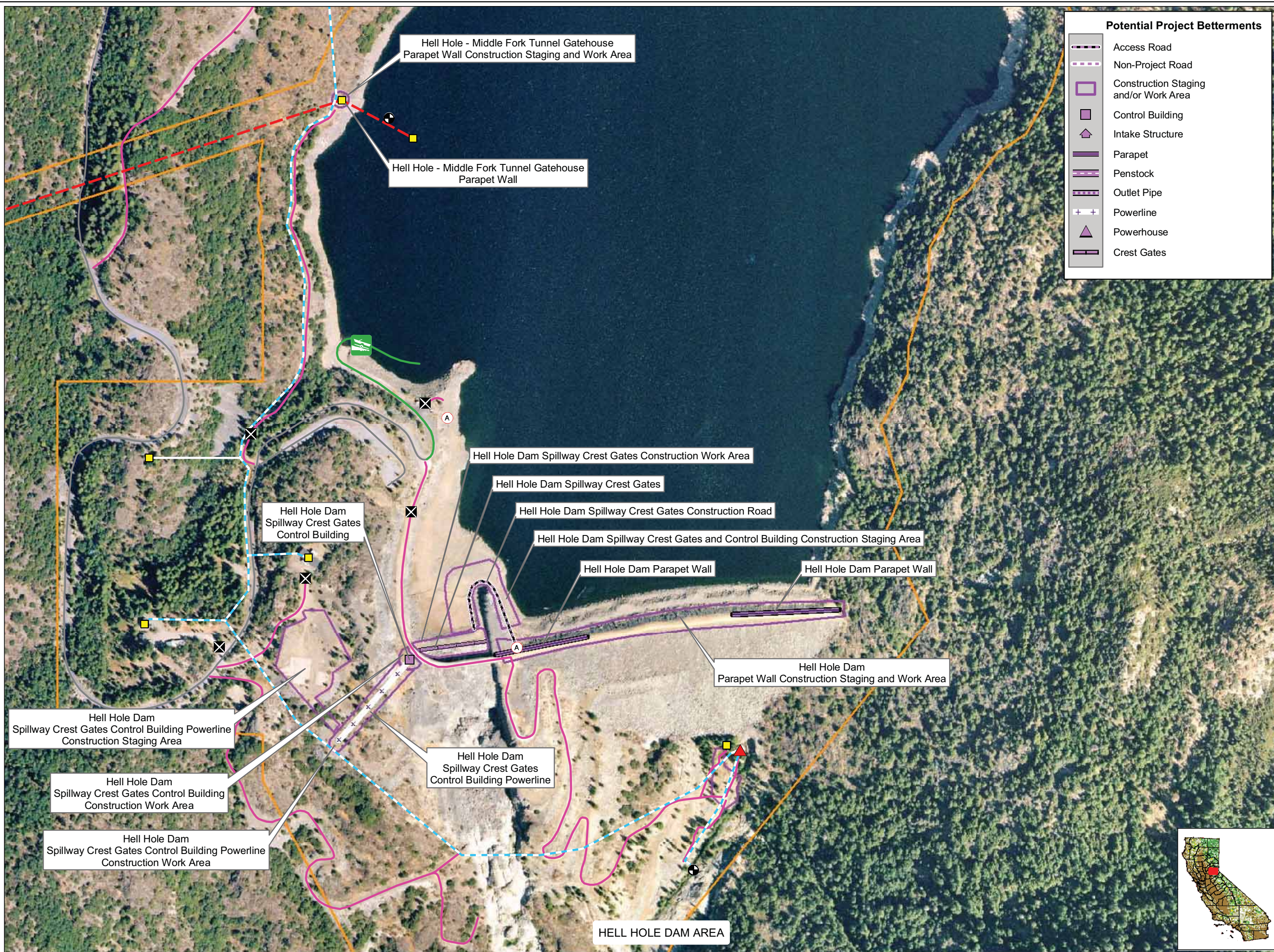


Date: 5/6/09



Projection: CA State Plane, Zone 2  
Datum: NAD 83





**Potential Project Betterments**

- Access Road
- Non-Project Road
- Construction Staging and/or Work Area
- Control Building
- Intake Structure
- Parapet
- Penstock
- Outlet Pipe
- Powerline
- Powerhouse
- Crest Gates

**PCWA Facilities and Features**

- Dam
- Ancillary and Other Facilities
- Powerhouse
- Gage
- Penstock
- Tunnel
- Gate
- Access Point
- Public Safety Fence
- FERC Boundary

**Project Power and Communication Lines:**

- Communication
- Power
- Power (underground)
- Communication/Power
- Communication/Power (underground)

**Transportation**

- Road
- Project Road
- Project Trail
- Recreation Access Road

**Project Recreation Facilities**

- Picnic Area
- Boat Ramp
- Scenic Viewpoint
- Developed Campground
- Water Supply Line

**Other Facilities**

PG & E Transmission Lines:

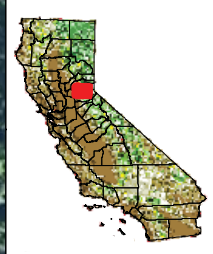
- 230 kV
- 60 kV

NOTE: Boundary of the potential betterment-related change in reservoir inundation area to be determined



Placer County Water Agency  
Middle Fork American River Project

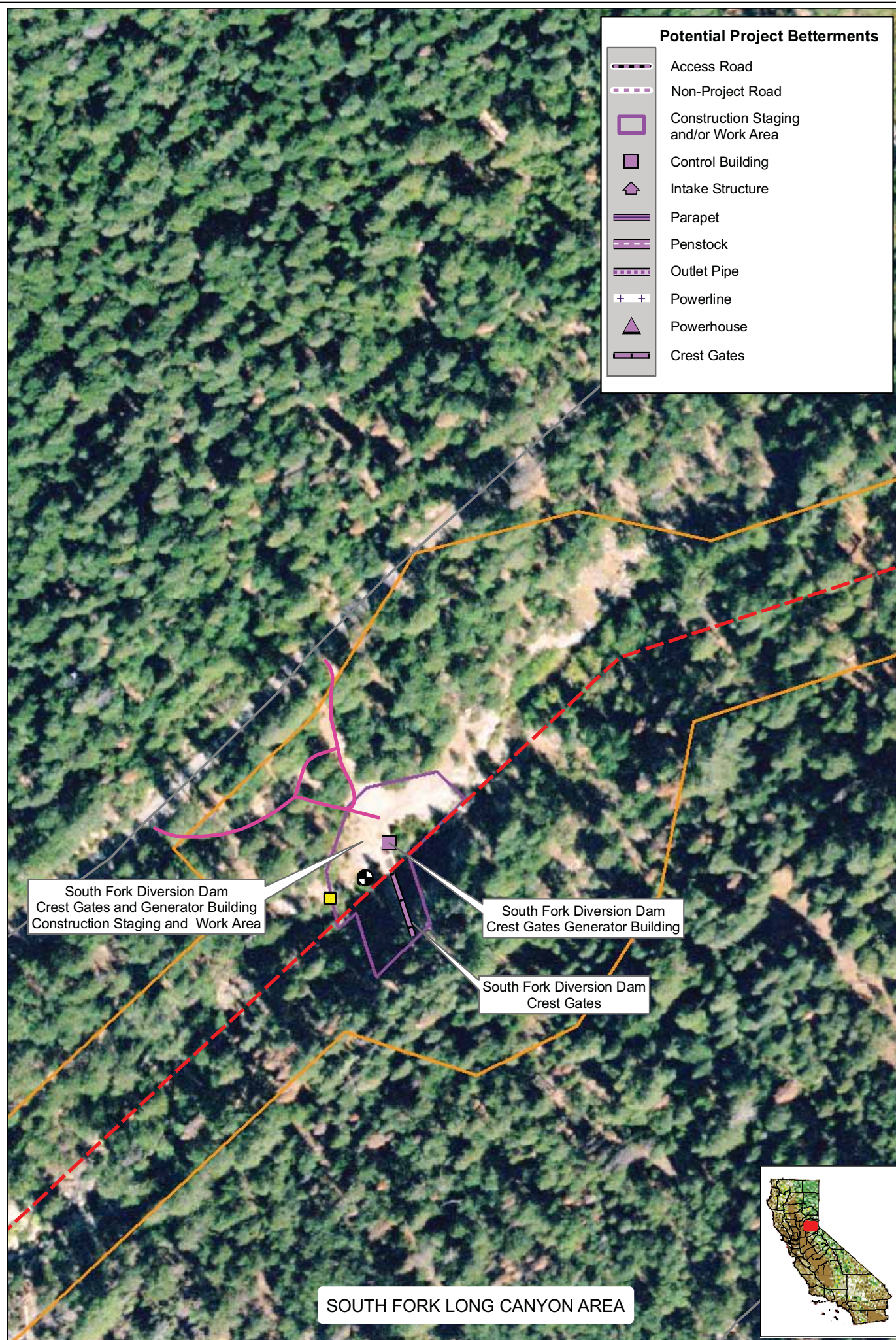
**Map LAND 1-2a  
Hell Hole Reservoir  
Seasonal Storage Increase**



0 250 500 Feet

Projection: Ca. Stateplane, Zone 2  
Datum: NAD 83

Date: 4/27/09



**Potential Project Betterments**

- Access Road
- Non-Project Road
- Construction Staging and/or Work Area
- Control Building
- Intake Structure
- Parapet
- Penstock
- Outlet Pipe
- Powerline
- Powerhouse
- Crest Gates

**PCWA Facilities and Features**

- Dam
- Ancillary and Other Facilities
- Powerhouse
- Gage
- Penstock
- Tunnel
- Gate
- Access Point
- Public Safety Fence
- FERC Boundary

**Project Power and Communication Lines:**

- Communication
- Power
- Power (underground)
- Communication/Power
- Communication/Power (underground)

**Transportation**

- Road
- Project Road
- Project Trail
- Recreation Access Road

**Project Recreation Facilities**

- Picnic Area
- Boat Ramp
- Scenic Viewpoint
- Developed Campground
- Water Supply Line

**Other Facilities**

PG & E Transmission Lines:

- 230 kV
- 60 kV

NOTE: Boundary of the potential betterment-related change in reservoir inundation area to be determined

Placer County Water Agency  
 Middle Fork American River Project

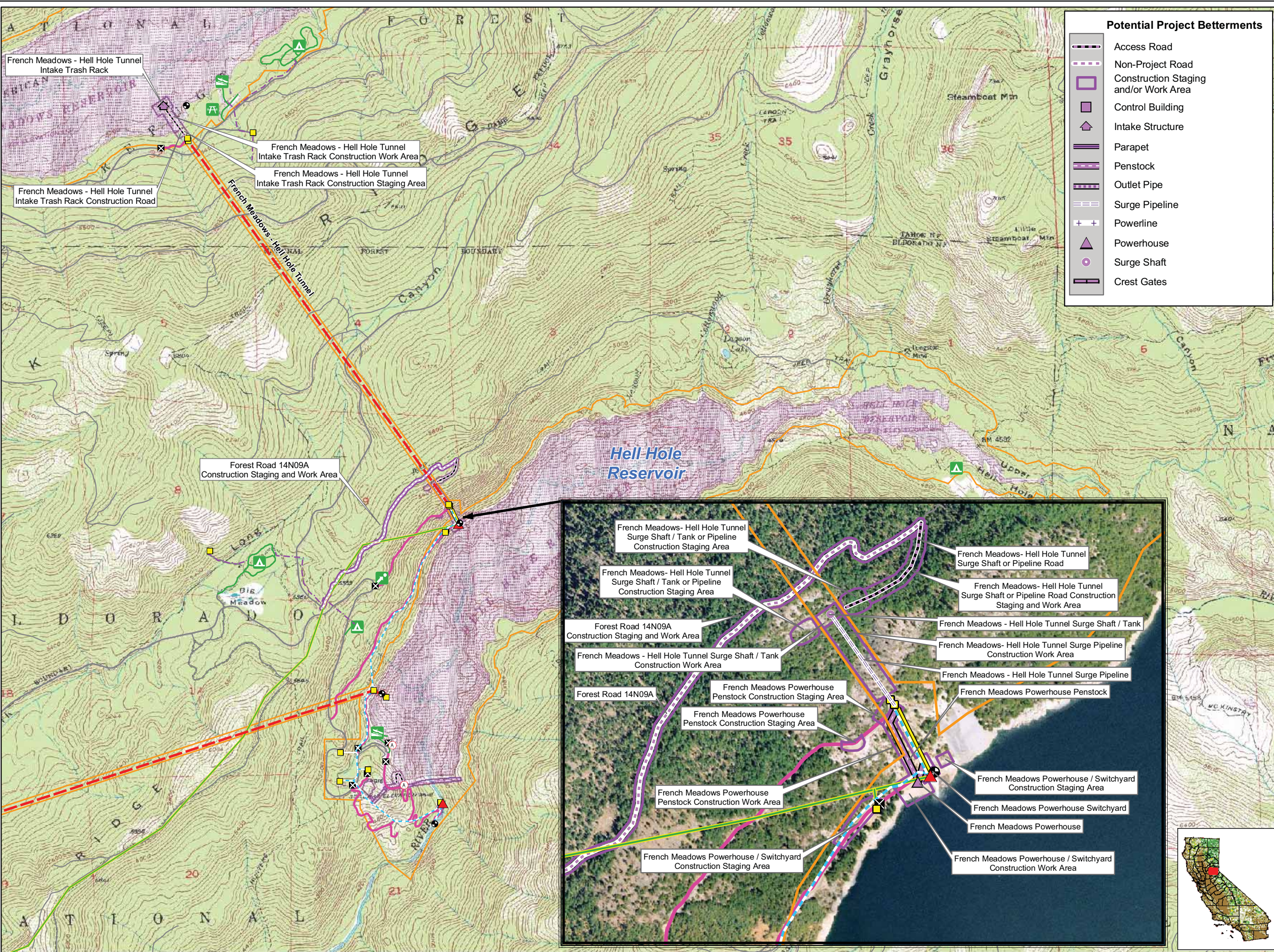
**Map LAND 1-2b  
 Hell Hole Reservoir  
 Seasonal Storage Increase**

0 50 100 Feet

Projection: Ca. Stateplane, Zone 2  
 Datum: NAD 83

Date: 4/27/09





### Potential Project Betterments

- Access Road
- Non-Project Road
- Construction Staging and/or Work Area
- Control Building
- Intake Structure
- Parapet
- Penstock
- Outlet Pipe
- Surge Pipeline
- Powerline
- Powerhouse
- Surge Shaft
- Crest Gates

### PCWA Facilities and Features

- Dam
- Ancillary and Other Facilities
- Powerhouse
- Gage
- Penstock
- Tunnel
- Gate
- Access Point
- Public Safety Fence
- FERC Boundary

### Project Power and Communication Lines:

- Communication
- Power
- Power (underground)
- Communication/Power
- Communication/Power (underground)

### Transportation

- Road
- Project Road
- Project Trail
- Recreation Access Road


### Project Recreation Facilities

- Picnic Area
- Boat Ramp
- Scenic Viewpoint
- Developed Campground
- Water Supply Line

### Other Facilities

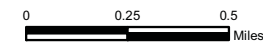
PG & E Transmission Lines:

- 230 kV
- 60 kV



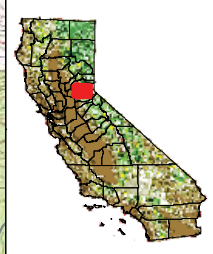
Placer County Water Agency  
Middle Fork American River Project

### Map LAND 1-2c French Meadows Powerhouse Capacity Upgrade



Projection: Ca. Stateplane, Zone 2  
Datum: NAD 83

Date: 4/27/09





### Potential Project Betterments

- Access Road
- Non-Project Road
- Construction Staging and/or Work Area
- Control Building
- Intake Structure
- Parapet
- Penstock
- Outlet Pipe
- Powerline
- Powerhouse
- Crest Gates

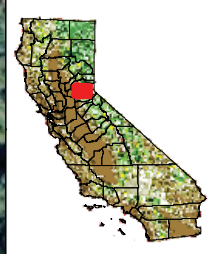

### PCWA Facilities and Features

- Dam
- Ancillary and Other Facilities
- Powerhouse
- Gage
- Penstock
- Tunnel
- Gate
- Access Point
- Public Safety Fence
- FERC Boundary
- Project Power and Communication Lines:**
- Communication
- Power
- Power (underground)
- Communication/Power
- Communication/Power (underground)
- Transportation**
- Road
- Project Road
- Project Trail
- Recreation Access Road
- Project Recreation Facilities**
- Picnic Area
- Boat Ramp
- Scenic Viewpoint
- Developed Campground
- Water Supply Line
- Other Facilities**
- PG & E Transmission Lines:**
- 230 kV
- 60 kV

Ralston Powerhouse Construction Staging Area

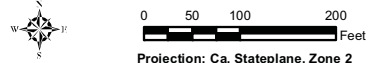
Ralston Powerhouse

Ralston Powerhouse Construction Staging Area

Placer County Water Agency  
Middle Fork American River Project

**Map LAND 1-2d**  
**Ralston Powerhouse Capacity Upgrade**



Projection: Ca. Stateplane, Zone 2  
Datum: NAD 83

Date: 4/27/09